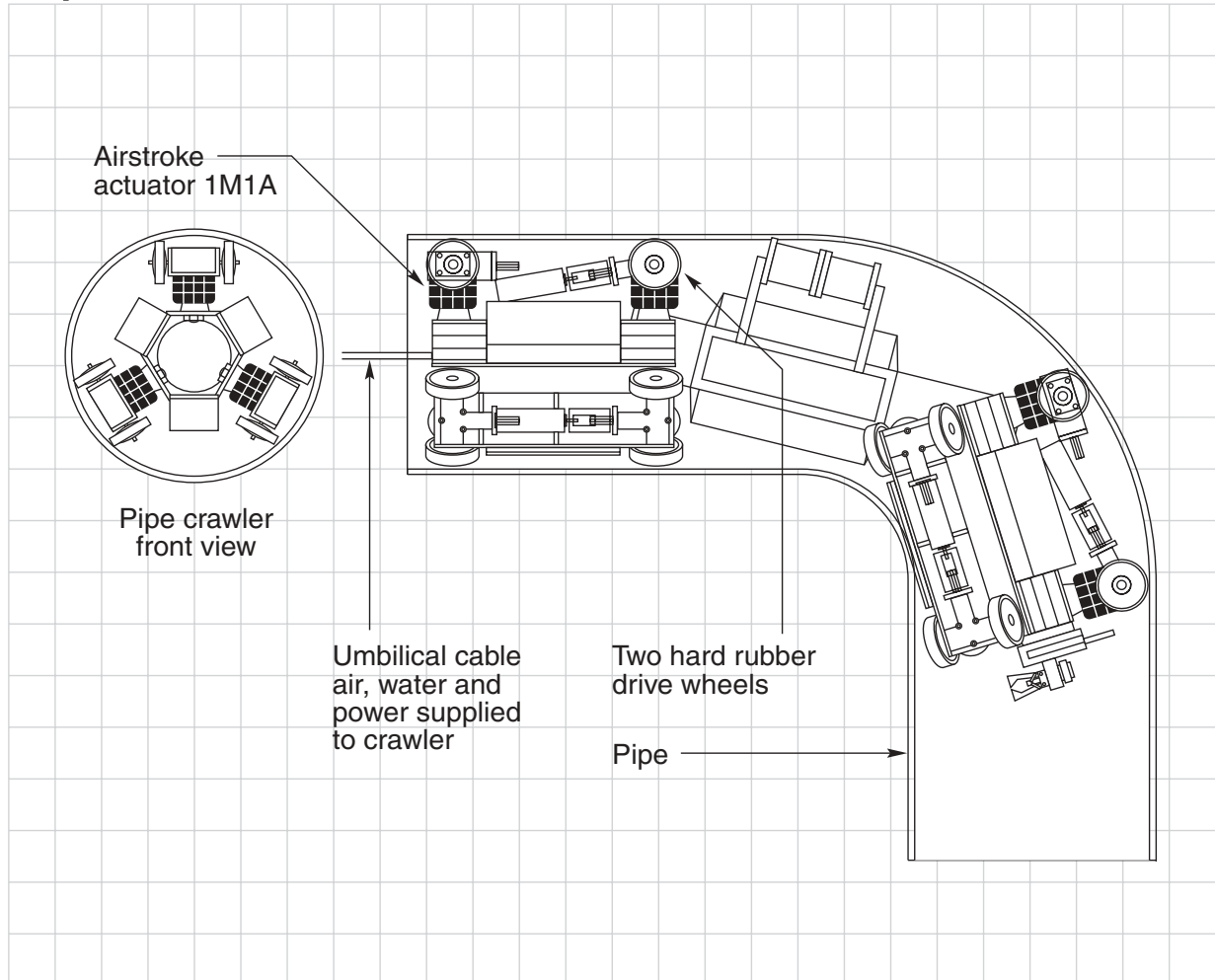


### Pipe Crawler



#### **Problem**

Crawling video unit used to inspect welds in underground pipes must adapt to twisting pipe networks and narrowing pipe diameters.

#### **Solution**

Airstroke actuators are used to provide the structural support for the system's drive assembly.

#### **Benefit**

The actuator allows the crawler unit to adapt for pipes with up to 5.2 cm of diametrical change while maintaining maximum tractive load and damping vibration.